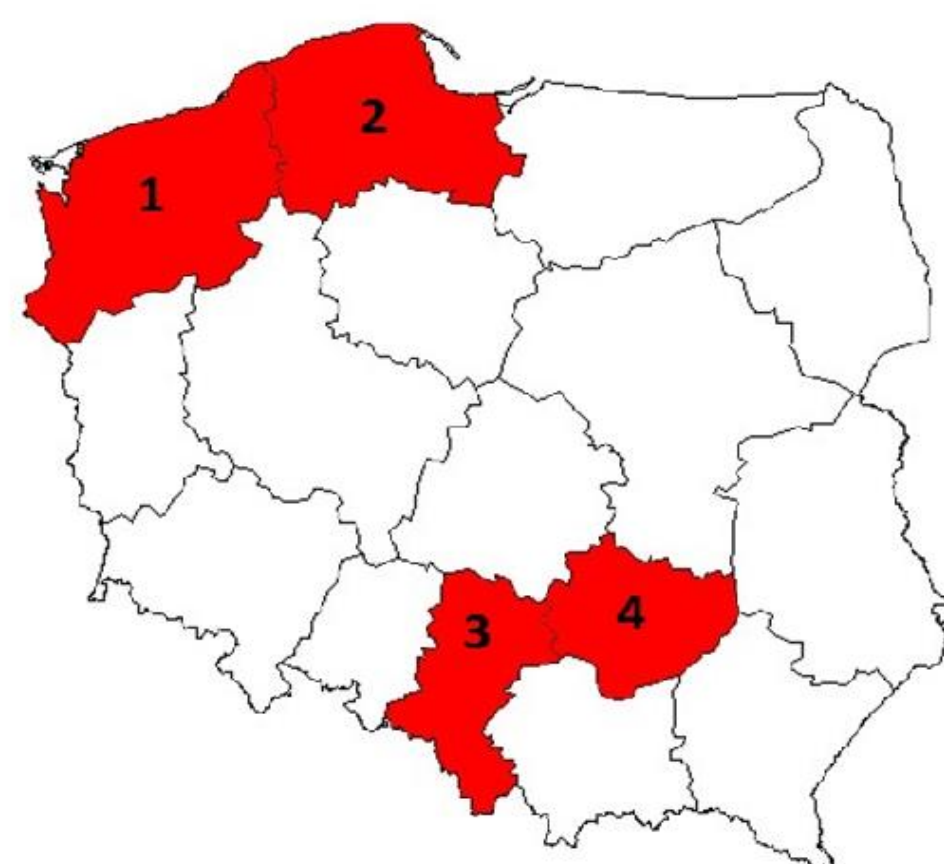


Counterfactual Impact Evaluation in Poland

Determining the value of selected economic indicators for beneficiaries of Regional Operational Programmes

A 2014 pilot evaluation study was delivered in Poland through cooperation between the the Ministry for Infrastructure and Development, the Main Statistical Office (*Główny Urząd Statystyczny* - GUS), the Marshal Offices (the Regional Managing Authorities) and other regional actors. The evaluation was designed to test the potential for using GUS data for the purpose of quasi-experimental, counterfactual approaches. Its main objective was to assess the value of various business support measures supported through the ERDF Regional OPs for four selected regions.

Regions covered by the evaluation



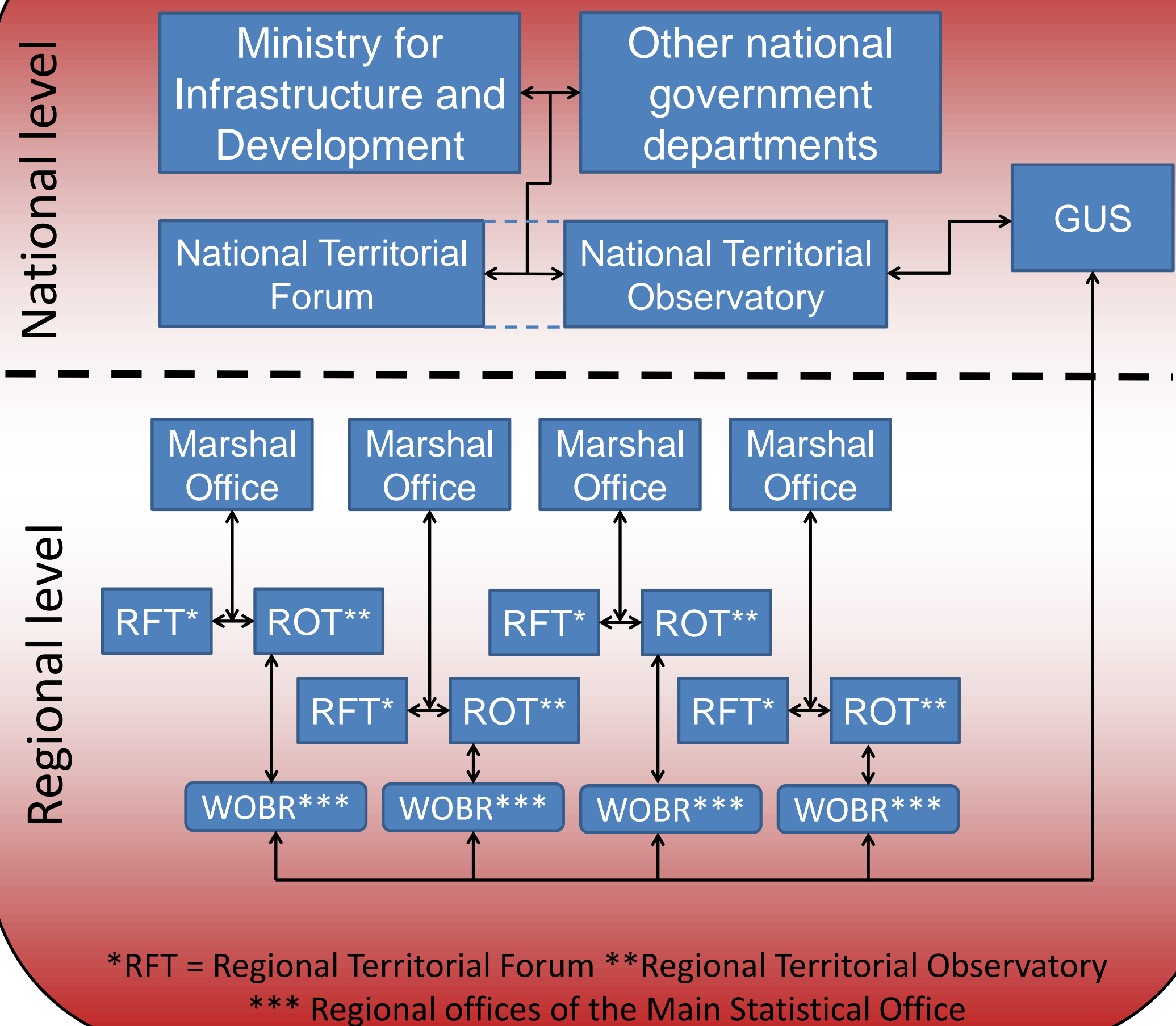
1. West Pomerania (*Zachodniopomorskie*)
2. Pomerania (*Pomorskie*)
3. Silesia (*Śląskie*)
4. Świętokrzyskie

The pilot evaluations involved an iterative, reciprocal exchange of information and data between regional and national level units (see right).

The process was undertaken in four stages (below).

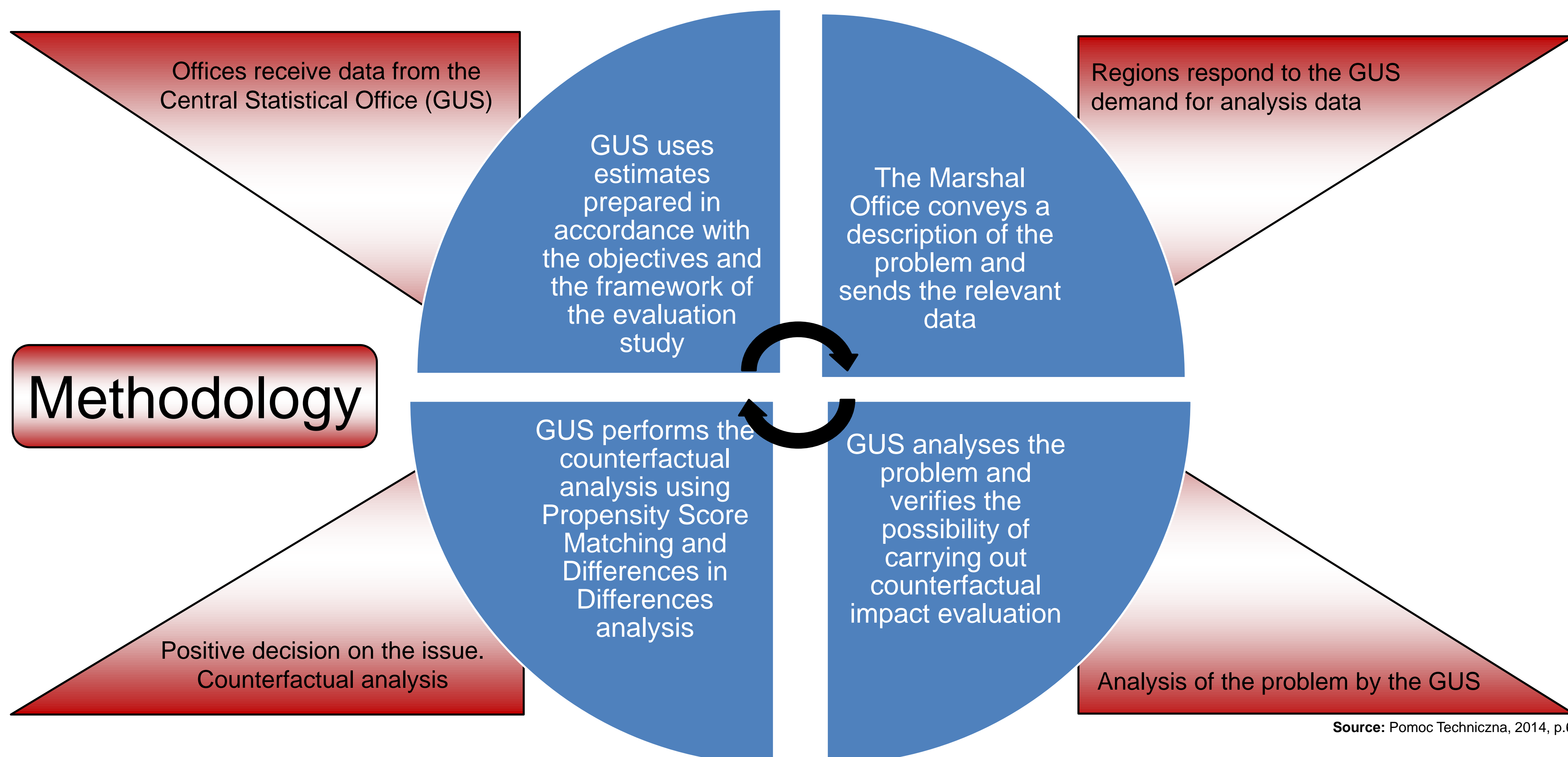
Final results indicated that the most significant differences between supported and non-supported firms concerned changes in levels of employment.

Organisational structure[†]



Source: Domańska and Pytalska, 2015

Methodology



Source: Pomoc Techniczna, 2014, p.6

For further information, please contact: Tomasz Kot, Department for Coordination of Development Strategies and Policies (ewaluacja@mir.gov.pl)

Sources

Domańska and Pytalska (2015) Prezentacja możliwości zwiększenia zasobów informacyjnych PBSSP 2016 w kontekście propozycji Regionalnych Obserwatoriów Terytorialnych, powerpoint presentation, Warsaw, 25 March 2015

Pomoc Techniczna (2014) Raport z badania: Ustalenie wartości wybranych wskaźników ekonomicznych dla beneficjentów Regionalnych Programów Operacyjnych oraz dla celowo dobranej grupy kontrolnej