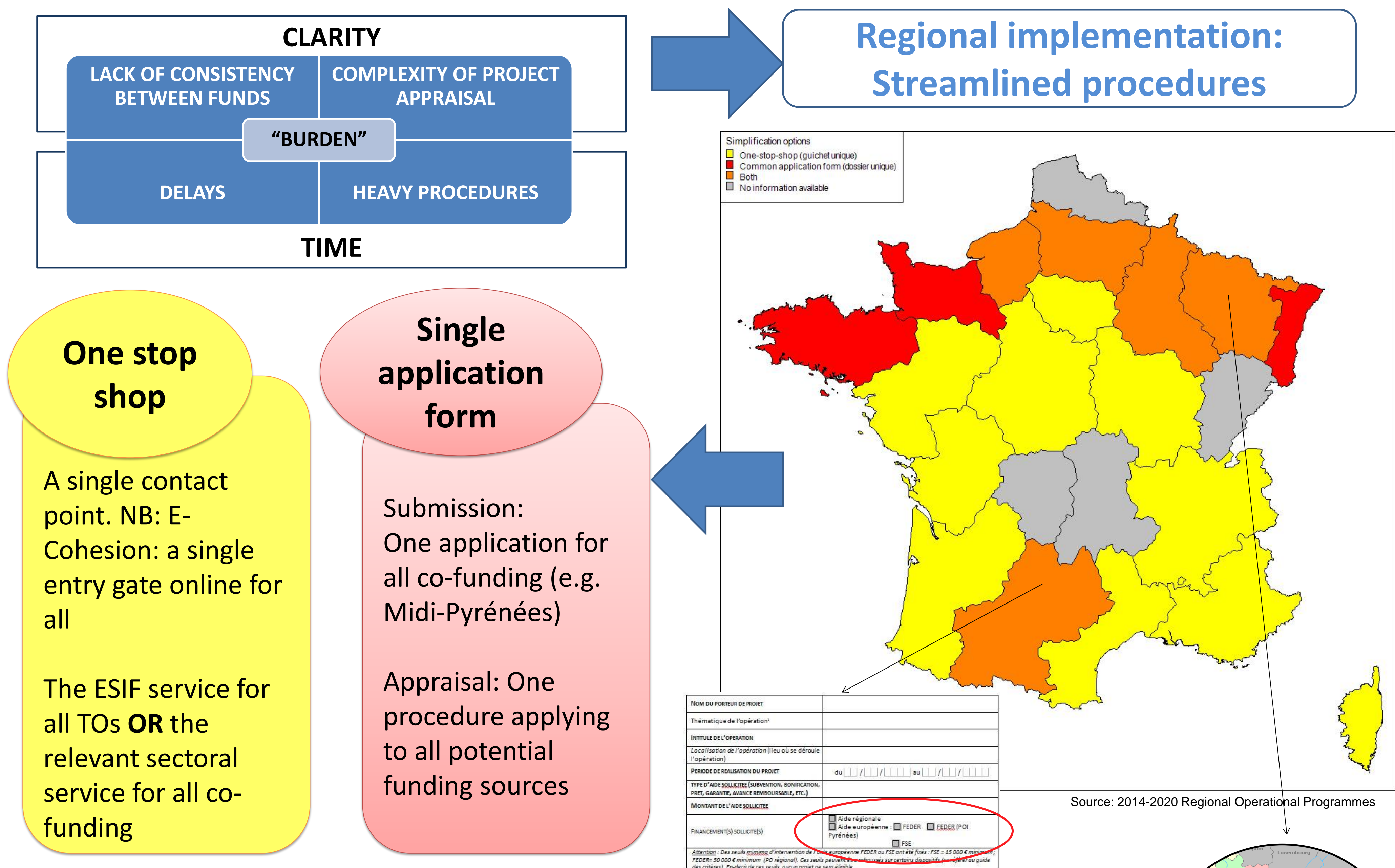


Simplification for applicants - France

A single application form for different sources of cofunding and/or a single interlocutor

The European Commission has put forth the reduction of administrative burden on beneficiaries as a necessity to ensure the smooth delivery of the policy and continued interest of the said beneficiaries. Regions have then stated their intentions to increase administrative efficiency by reducing the number of unnecessary contacts with potential beneficiaries.



Lorraine: SINGLE PROCEDURE from application to payment, as of 2007

WHY

- 90 percent of ERDF themes are also Regional competencies
- Strategic coherence between Regional policies and ESIF
- One procedure to follow for the beneficiaries: simple, clear

WHAT

- Application/appraisal: ONE form to the relevant sectoral service for all funding requests (one-stop shop)
- Information to the ERDF-ESF Pre-programming regional committee to inform partners and avoid overlaps (e.g with State, MA of the national ESF OP).
- Programming/payment: ONE decision by the Regional Permanent Commission (elected officials, final decision on all regional and EU co-funding, ONE funding agreement, ONE payment made to the beneficiary)

HOW

- Regional processes adapted to EU rules (e.g. administrative rigour: increased precision of the appraisal reports)
- Hand-outs; Calls for Projects limited to fields where identical selection requirements are possible
- Assistance by ESIF units (e.g. 10 staff in the ERDF unit) permanently detached in sectoral services
- ESIF-specific tasks directly handled by ESIF detached staff (e.g. control of claimed expenditure)

OUTCOME

- +
- Positive feedback from beneficiaries in 2007-13
 - Good programming rate
 - Synergy between funds / Strategic coherence
 - Increased competencies among admin. staff

-
- Transition stage: increased workload, longer procedures

For further information, please contact: Timothée Lehuraux, timothee.lehuraux@strath.ac.uk

Source
2014-2020 ERDF/ESF Regional Operational Programmes, and Implementation documents
Regional European Funds websites, "Europe in Lorraine"
Interview with Mélanie CONRAUD, Director of the ERDF Unit at Lorraine Region