

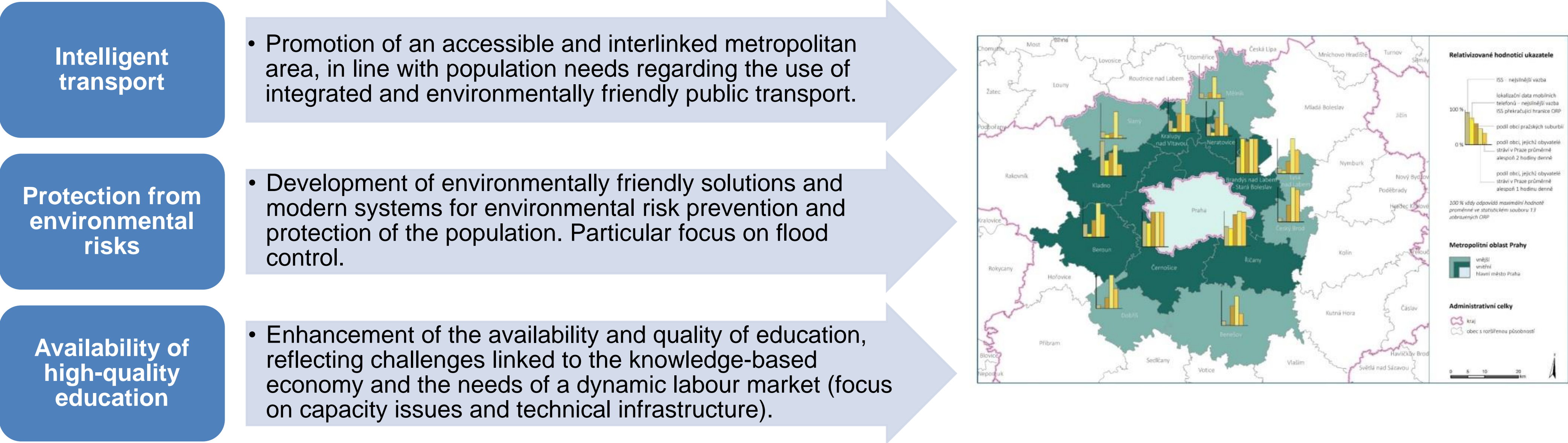


# The Prague and Central Bohemia ITI in a functional agglomeration

Prague and Central Bohemia is one of seven agglomerations that have been identified as ITIs (the others are Brno, Ostrava, Plzeň, Hradec Králové and Pardubice agglomeration and Ústí and Labem and Chomutov agglomeration). A key feature of the ITI is that it combines a 'More Developed' region – the city of Prague with the economic and administrative functions of a capital – and a 'Less Developed' region – Central Bohemia – its hinterland. The region covers approximately two million inhabitants, i.e. one fifth of the Czech population, living in 14 municipalities with extended authority. The Prague hinterland has been classified into outer and inner hinterland based on the linkages between the municipalities with the capital. The overall objective of the Prague Metropolitan Area is to further develop the interconnection between the core and periphery of the Prague agglomeration into a functional entity with an effectively distributed infrastructure of public services.

In 2014-20, the Czech Republic will implement ERDF and ESF programmes, benefitting from €11.9 billion of ERDF, €3.4 billion of ESF and €6.2 billion Cohesion Fund.

## Priorities



## Governance

National Permanent Conference (NPC)			
Representatives of ITIs, regional and local authorities, MRD and National Coordination Authority; supported by Regional Permanent Conference  Coordination of ITIs and the territorial dimension of the ESI Funds at national level  Recommendations on timing and other aspects of project calls  Discussion of ITI strategies; monitoring of ITI implementation	Ministry of Regional Development (MRD)		
	Methodological and organisational leadership (guidelines, timing of ITI preparation and implementation)  Formal approval of integrated strategies  Discussion of NPC recommendations with managing authorities	Managing Authority	
		Approval of integrated strategies (compliance with OP priorities)  Definition of selection criteria, preparation and publication of project calls under integrated strategies  Project appraisal, selection and monitoring	ITI  Status of Intermediate Body  Strategy preparation, animation, pre-selection (conclusion of contracts), monitoring, reporting  Establishment of working groups and a committee for strategy preparation

