

The European Network for Rural Development

David Lamb
ENRD Contact Point
1 February 2017

Who we all are

The European Network for Rural Development (ENRD)



Who we all are

The European Network for Rural Development (ENRD)

ENRD objectives



Improve the quality of RDP implementation



Increase involvement of stakeholders in the implementation of rural development policy



Inform the broader public

Contact Point of the ENRD



*The **Contact Point** animates the **ENRD** through a number of activities to **maximize the added value of networking** and achieve the objective set for the network*

What we do - ENRD core areas of activity

**Analysis of RDPs
and Good Practices**

Thematic work

**Knowledge
development**



**Networking
Events**

**Exchanges
and
cooperation**

**Knowledge
sharing**

**Guidance and
training**

Publications

**Website and social
media**



How we do it

Priorities

1. More effective and simpler programme implementation

2. Strengthening NRNs and NSUs

3. Simpler and more effective CLLD

4. Smart and competitive rural areas

5. Green Economy

How

Capacity building and peer exchange

Integrated working themes

Cross cutting activities:

- RDP analysis
- Good practices
- Communication
- Coordination with other networks + self assessment

Putting identified RD priorities into practice

Cross-cutting activities

- **RDP analysis and good practices**
 - 28 PAs and 118 RDP fiches
 - Screening and analysis
 - Ruralabs, country teams + profiles
 - 100 Good Practices feed into priorities.
- **Communication**
 - ENRD Website - the reference point for RD
 - Two-way flows with stakeholders – social media, ENRD infoline
- **Coordination with other networks**
 - Closer coordination – exchanges between NRNs

European Structural and Investment Funds

€630 millions of investment, including national co-financing

**500+ programmes
(National / regional + INTERREG)**

European Regional
Development Fund

€197 billion

European Social Fund

€86 billion

Cohesion Fund

€63 billion

European Agricultural
Fund for Rural
Development

€99 billion

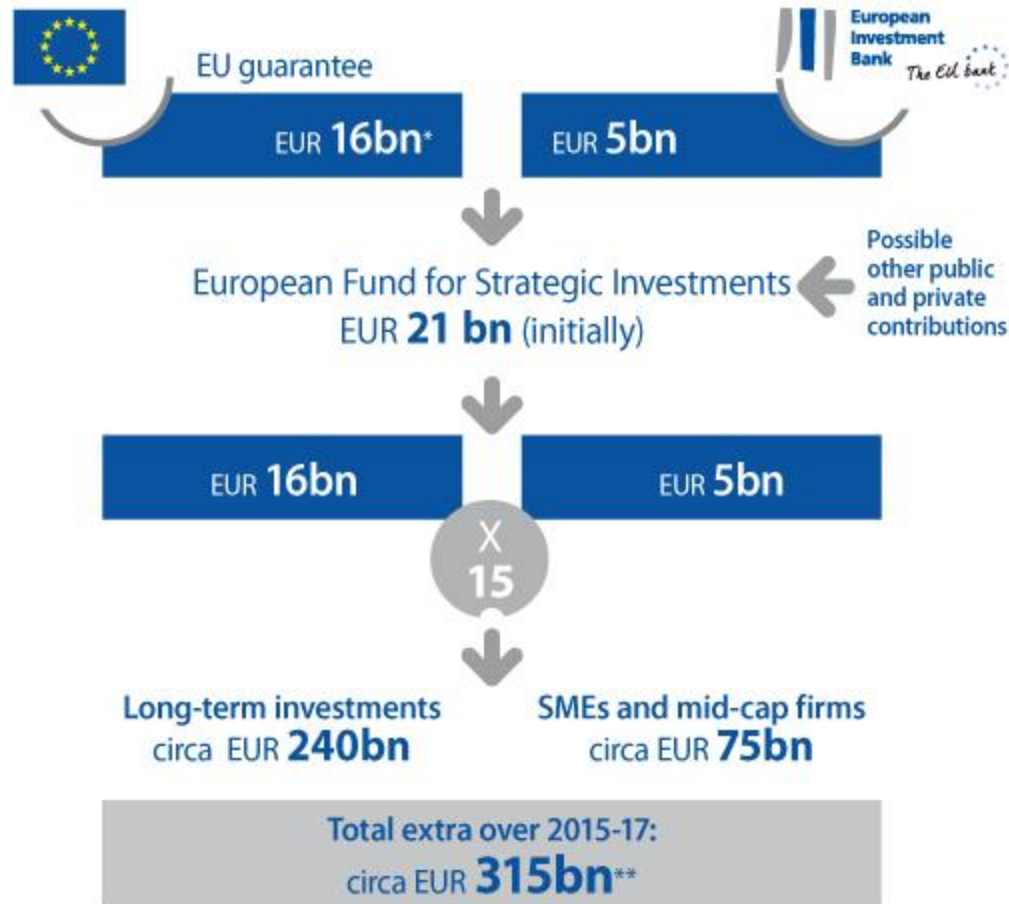
European Maritime &
Fisheries Fund

€5.7 billion

Youth Employment
Initiative

€3.2 billion

EFSI



* 50% guarantee = EUR 8 bn from Connecting Europe Facility (3.3), Horizon 2020 (2.7) and budget margin (2)

** Net of the initial EU contributions used as guarantee: EUR 307 bn

Of which
EUR 21.5bn
signed

EIB Group figures

As of 31/12/2016

Approved EFSI
financing*

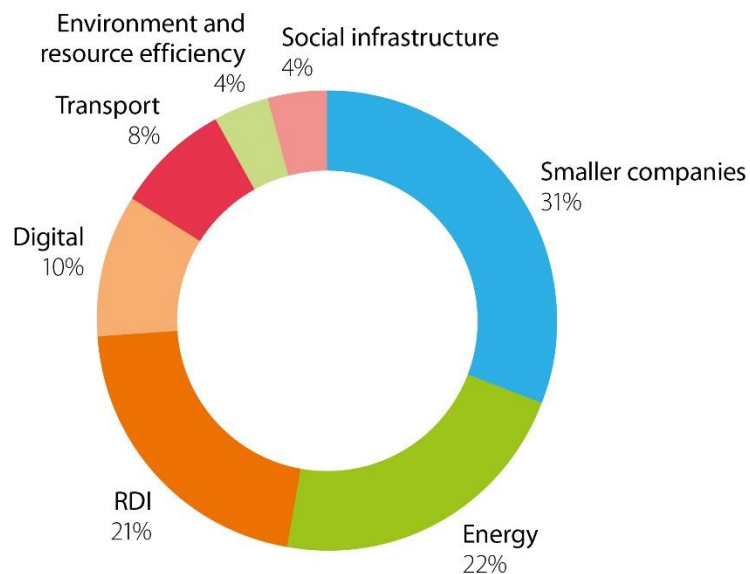
Total investment related to EFSI
approvals

EUR 30.2bn

EUR 163.9bn

* EIB-approved: EUR 22bn
EIF-approved: EUR 8.2bn

EFSI investment by sector**



EFSI investment relative to GDP**

Darker colours signify higher investment



LEADER EVOLUTION...

LEADER = **L**iaison **E**ntre **A**ctions de
Développement de l'**É**conomie **R**urale
(Links between the rural economy and development actions)

LAG = **L**ocal **A**ction **G**roup
LDS = **L**ocal **D**evelopment **S**trategy

LEADER / Axis

2007-2013

2,402 LAGs

**Mainstreamed
as an integral
part of the EU's
rural development
policy covers
2,402 rural
territories**

LEADER +

2000-2006

1,153 LAGs

The initiative covers
all types of
rural areas

LEADER II

1994-1999

906 LAGs

Focused on
**disadvantaged
rural areas**
(217 regions)

**Stand-alone LEADER Programmes
with separate financing**

Total Public Budget:

5.37 BILLION €

Total Public Budget:

5.1 BILLION €

LEADER I

1991-1993

217 LAGs

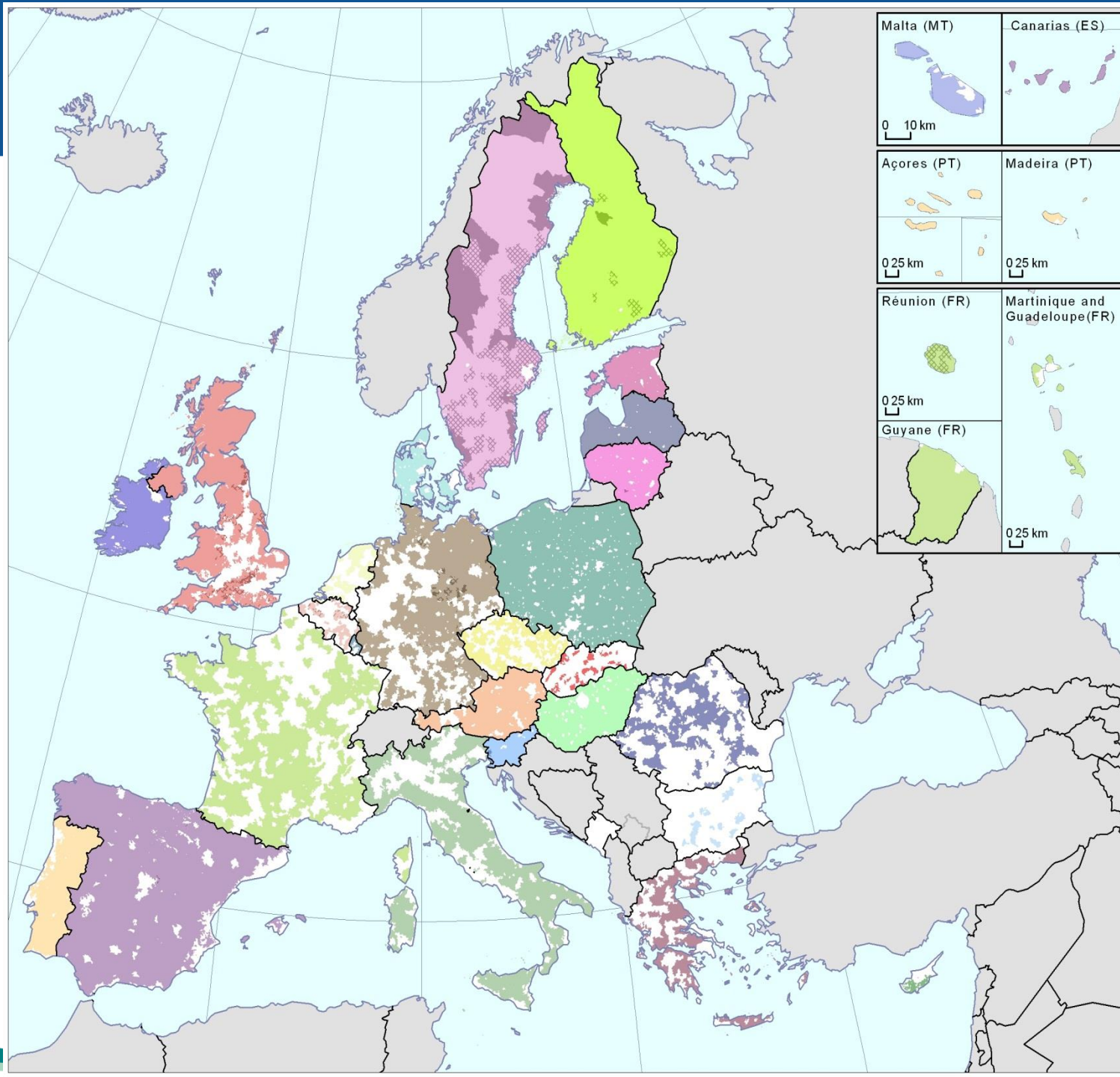
**Experimental
phase**

Total Public Budget:

1.2 BILLION €

Total Public Budget:

9.2
BILLION €



**LEADER
Local Action Groups
Draft version**

**Geographical coverage of LAGs
based on the LAU2
(Local Administrative Units).**

Cartography:
DG AGRI GIS-Team 05/2012

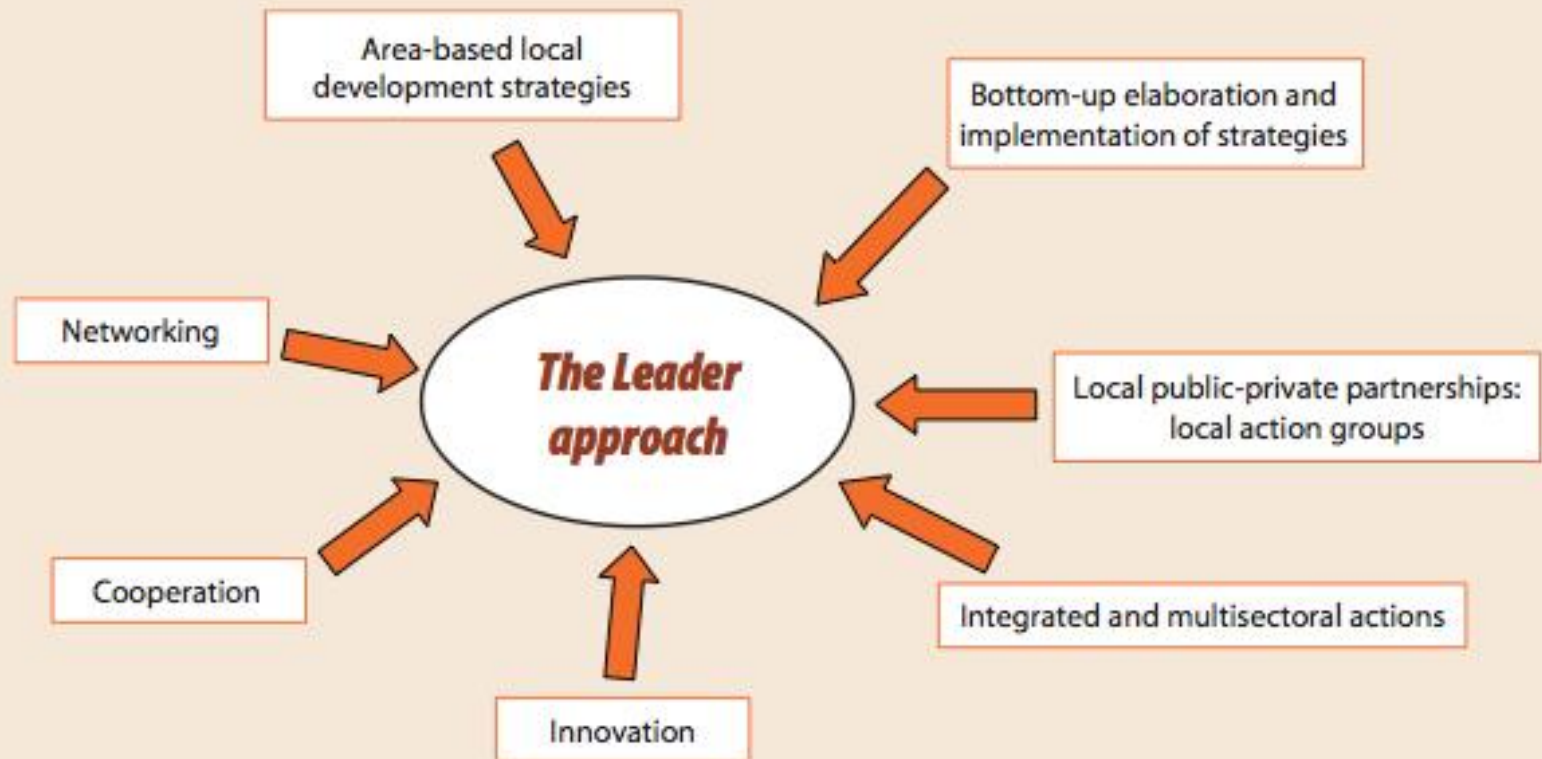
© EuroGeographics for the administrative boundaries



0 125 250 500 750 km

The 'same' principles

The seven key features explained



The uniqueness of LEADER

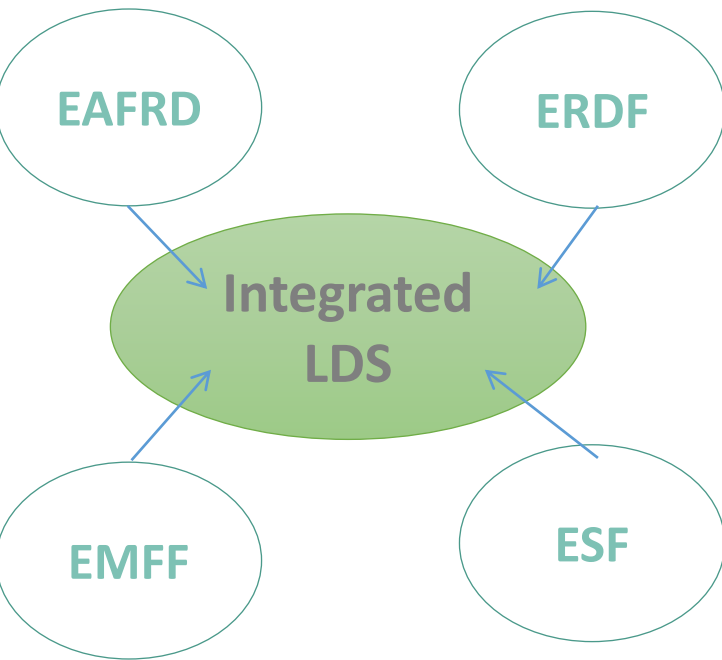
LEADER/CLLD is the only programme where strategies are designed and projects selected by local people

...certain types of problems can be much better addressed through the bottom-up LEADER approach (than through top-down approaches)



New opportunities: CLLD (2014-2020)

1. **Multiple types of areas:** rural, urban and coastal territories covered by single Local Development Strategies



2. **Multi-fund in some MS:** overcoming the demarcation of funds

3. **Integrated strategies:** stronger focus on addressing local problems through complex/integrated strategies

Thank you !

ENRD Contact Point

+32 2 801 38 00

Info@enrd.eu

Twitter: @enrd_CP

Youtube: EURural

